
Japan at a Glance: Basics

Location: Japan's neighbors include the Republic of Korea, China, and Russia.



National flag: Known as the Hinomaru, the flag depicts the sun as a red ball against a white background.



Population: 126,926,000 (as of 2000)

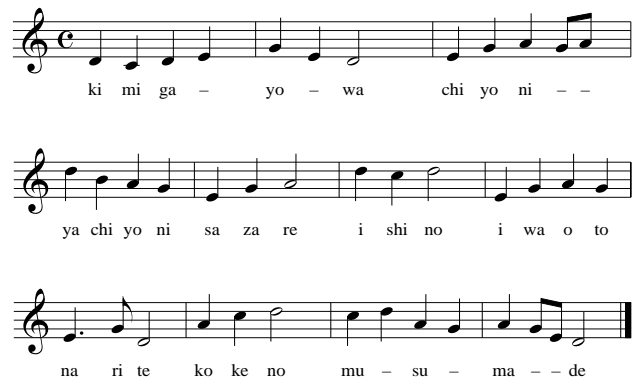
Land area: 377,873 square kilometers

National anthem: "Kimigayo"

Kimigayo

Words: Anonymous

Music: Hiromori Hayashi



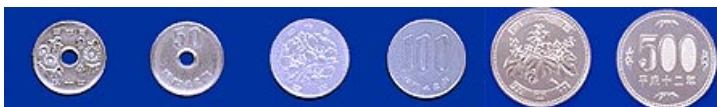
Unit of currency: yen



1 yen coins

5 yen coins

10 yen coins



50 yen coins

100 yen coins

500 yen coins

(Photos courtesy of Bank of Japan)



1,000 yen notes

2,000 yen notes

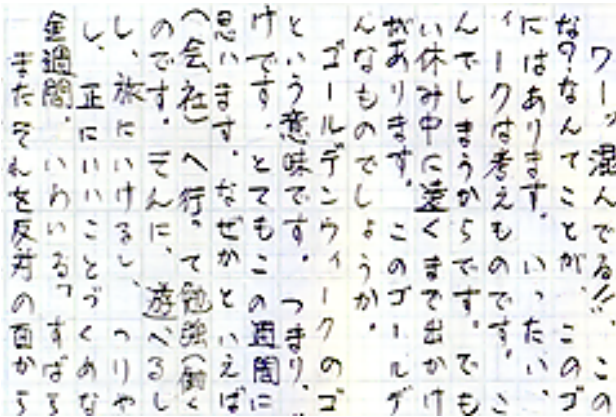


5,000 yen notes

10,000 yen notes

(Photos courtesy of National Printing Bureau)

Language: Japanese (The written Japanese language uses a combination of three writing systems: kanji, hiragana, and katakana.)



Main religions: Shinto, Buddhism, and Christianity

Number of prefectures: 47

Capital: Tokyo (population 12,064,000 as of 2000; land area 2,102 square kilometers)



(Photo courtesy of JNTO)

Emperor: Emperor Akihito acceded to the throne as the 125th emperor of Japan in 1989. The emperor is the symbol of the state and of the unity of the people.



(Photo courtesy of Imperial Household Agency)

Government

Legislature: House of Representatives (480 members); House of Councillors (247 members)

Administration: Cabinet Office and 12 ministries under a prime minister

Judiciary: Supreme Court, High Courts, District Courts, Summary Courts, and Family Courts

Main industries: automobiles, precision machinery, consumer electronics, computers, and other electronic goods

GDP: US\$4,296 billion (as of 2002)

Number of Internet users: 55.93 million people (as of the end of 2001)